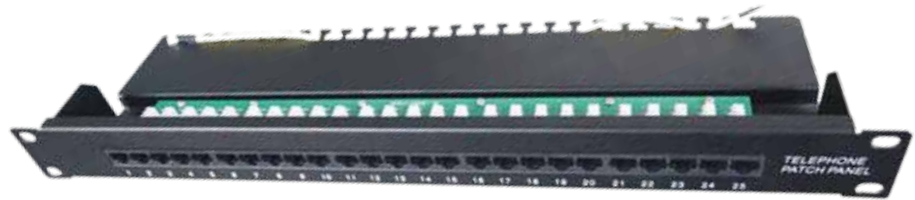




## Copper Patch Panel



# DATA SHEET

+44 20 8895 6455  
info@webbinfra.com  
www.webbinfra.com

## 1U CAT3 25 Ports UTP Data & Voice Patch Panel

A cost effective method of terminating multi-pair voice cables with LSA style termination blocks and integral cable management.

### Features

- CAT3 data and voice 1U patch panel with 25 ports
- Angle: 90 degree
- Termination: LSA IDC
- Adherence to the requirements of:
  - TIA/EIA-568-A and TIA/EIA-568-B category 3
  - TIA/EIA TSB-40
  - Standard 11801 ISO/IEC generic cabling
  - Standard EN50173 CENELEC generic cabling



*\*Specifications are subject to change without notice based on technical recommendations and related product enhancements*

## Specifications

- IDC - PC UL94V-0
- Housing: ABS or PC
- Designed for 22-26 AWG solid conductors
- Patch panel rear is attached with cable managers for suitable cable management
- High resistance capability
- Strong and user-oriented installation, which reduces the installation and operating cost.
- Transmission consistency and reliability
- PCB - FR-4 1.60 mm (0.06") two impenetrable layers
- Contacts: 0.45 mm (0.018") phosphor bronze with 3U to 50U diameter gold coating on contact area

## Electrical Characteristics

- Current rating: 1.5 A maximum
- Voltage ranking: 150 V
- Contact resistance: 20 mohm
- Insulation: 500 mohm
- Dielectric voltage resistance: 1000 V AC RMS, 60Hz/1minute

## Product Description

Part number	C.08.CPPC3.25.UTPS.B.L
Material	SPCC
Temperature interval	-40°C-70°C(storing); -10°C-60°C(installation); -10°C-60°C(working)
Insulation diameter	0.7mm-1.4mm (1.6mm)
Treatment	Powder-glazed
Color	Black/grey

*\*Specifications are subject to change without notice based on technical recommendations and related product enhancements*